



The College Process

Entrance Exams and
College Credit in High
School

RESOURCES



Resources: Ferguson Website



Welcome to
John A. Ferguson Senior High

Home of the Falcons



John A. Ferguson Senior High School

Our Vision & Mission



Students

<i>Academies</i>	<i>Magnet</i>
<i>FBN News</i>	<i>The Talon</i>
<i>Activities</i>	<i>Athletics</i>
<i>Gradebook</i>	<i>A/B Calendar</i>
<i>Uniform Policy</i>	<i>Information Center</i>

Parents

<i>Handbook</i>	<i>Gradebook</i>
<i>Parent Portal</i>	<i>PTSA</i>
<i>School Meals [English] [Spanish]</i>	

Faculty

<i>Gradebook</i>	<i>STOP for Schools</i>
<i>Directory</i>	<i>Departments</i>
<i>Staff E-Mail</i>	<i>Faculty Portal</i>
<i>Teacher Forms</i>	<i>Heat Tickets</i>

Resources: Ferguson Website

Students		
<i>New Student Orientation Handbook 2011-2012</i>		
<i>Parent/Student Handbook 2011-2012</i>		
<i>The Talon Online!</i>		
<i>Completing your Subject Selection Form for Students</i>		
<i>District School Calendar</i>		
<i>A/B Calendar Aug. - Oct. 2011</i>	<i>A/B Calendar - Nov. - Jan. 2011 (TBA)</i>	<i>A/B Calendar - Feb. - April 2012 (TBA)</i>
<i>A/B Calendar - May - June 2012 (TBA)</i>	<i>Athletics</i>	<i>Academies</i> <i>Academy Completion Guidelines for 2011-12</i> <i>Academy Completion Guidelines for 2013</i>
<i>Activities Events</i>	<i>Attendance Policy</i>	<i>Bell Schedule</i>
<i>Career and Vocational Services</i>	<i>Close Up</i>	<i>Clubs</i>
<i>College Corner</i>	<i>Community Service Packet</i>	<i>Counselor Appointments</i>
<i>Curriculum Bulletin</i> <i>(This file takes a while to open)</i>	<i>Dial-A-Teacher</i>	<i>FCAT Explorer</i>

Resources: Ferguson Website



College Corner

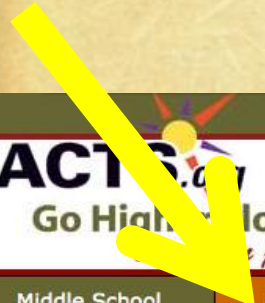
<i>ACT Student</i>	<i>CAP Packet</i>	<i>CollegeBoard.com</i>
<i>FACTS.org</i>	<i>FAFSA</i>	<i>Fee Waiver</i>
<i>Financial Aid</i>	<i>Florida Financial Aid/Bright Futures</i>	<i>Free SAT/ACT/GRE Prep</i>
<i>Junior Checklist</i>	<i>Princeton Review</i>	<i>SAT Student</i>
<i>SAT/ACT Testing Dates</i>	<i>Scholarship Bulletin (Coming soon)</i>	<i>Senior Checklist</i>
<i>Senior Presentation</i>		

15900 SW 56th St.
Miami, FL 33185



School: (305) 408-2700
Fax: (305) 408-6487

Resources: www.facts.org



[Skip Navigation](#)

FACTS.org
Go High School Florida, *the state pays!*



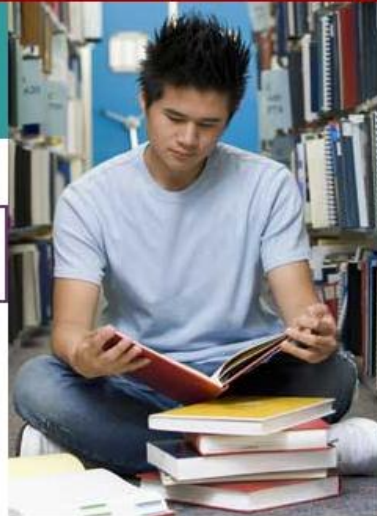
[STUDENT LOG IN](#) | [HOME PAGE](#) | [SITE MAP](#)

Middle School Students	High School Students	Finding a College or Program	Paying for College	Applying for College	College Students	Counselors & Educators
--	--------------------------------------	--	------------------------------------	--------------------------------------	----------------------------------	--

Florida's educational opportunities and student advising at your fingertips!

As of July 18, 2011, FACTS.org requires all students to have a FACTS Login ID to access student academic information.

■ FACTS.org is Florida's Academic Counseling and Tracking for Students. Sponsored by the Department of Education and the Florida Center for Advising & Academic Support, this free online advising website helps students plan and track their education progress from middle school through college.



News & Info:

[FACTS.org launches *Finish Up, Florida!* campaign](#)



Resources: www.facts.org

FACTS.org
Go Higher Florida,
education pays!



[STUDENT LOG IN](#) | [HOME PAGE](#) | [SITE MAP](#)

Middle School Students	High School Students	Finding a College or Program	Paying for College	Applying for College	College Students	Counselors & Educators
--	--------------------------------------	--	------------------------------------	--------------------------------------	----------------------------------	--

High School Students

Explore Careers <ul style="list-style-type: none"> Career Development Career Planning - Florida CHOICES Related Links & Resources 	High School 101 <ul style="list-style-type: none"> Graduation Requirements Earning College Credit Now Bright Futures Scholarships FCAT & College Entrance Tests State University Admission Requirements Information for Students with Disabilities 	Plan & Track Progress <ul style="list-style-type: none"> Academic planning with ePEP Check Bright Futures Scholarship Eligibility Check Graduation Status Check University Admission Requirements Status Things to Do, Year-by-Year
Go Higher, Education Pays <ul style="list-style-type: none"> Why go to college? Which degree is for me? Can I get in? What's the cost? Who can help me make it happen? 	Getting Ready for College <ul style="list-style-type: none"> Finding a College or Program Paying for College Applying for College 	Family & Mentors <ul style="list-style-type: none"> Parent's Guide to ePEP Parent Primer on Career Exploration Students with Disabilities

Quick Links:



[Need Help](#) | [Site Map](#) | [Glossary](#) | [Communications Archive](#) | [Privacy](#) | [Copyright](#)

Brought to you by the [Florida Department of Education](#) and the Florida Center for Advising & Academic Support.



Resources: www.facts.org

Skip Navigation



[STUDENT LOG IN](#) | [HOME PAGE](#) | [SITE MA](#)

[Middle School Students](#)

[High School Students](#)

[Finding a College or Program](#)

[Paying for College](#)

[Applying for College](#)

[College Students](#)

[Counselors & Educators](#)

Finding a College or Program

Go Higher, Education Pays

- [Why go to college?](#)
- [Which degree is for me?](#)
- [Can I get in?](#)
- [What's the cost?](#)
- [Who can help me make it happen?](#)

Explore Careers

- [Career Development](#)
- [Career Planning - Florida CHOICES](#)
- [Related Links & Resources](#)

College Search

- [Find a College or Program](#)
- [Find Online Classes or Programs](#)

Quick Links:



[College or Program Search](#)

Going Back to School

- [Steps for Re-Enrolling in College](#)
- [Steps for Earning your GED](#)
- [Adult Education Programs](#)

College Links

- [Home Pages](#)
- [College Admission Offices](#)
- [Career Centers](#)
- [College Catalogs](#)
- [Disability Services](#)
- [Fees & Payments](#)
- [Library Services](#)
- [Records & Registration](#)
- [Student Services](#)

College Board

www.collegeboard.org



for Students

College Board Tests

Plan for College

Find a College

Apply to College

Pay for College

Plan for College

[Home](#) > Plan for College

- Starting Points ▶
- High School ▶
- Boost Your Skills ▶
- College Success ▶

Tools

- My College QuickStart
- MyRoad Careers & Majors

More Tools

Select One...

My Organizer [Sign Up](#)

Create a free account.

User Name:

Password:

[Sign In](#)

[Forgot your user name?](#)

[Forgot your password?](#)

Sometimes the toughest part of planning something is just figuring out where to start. Get on track to finding an education and career track that matches your skills and preferences. Learn about all your options — and how you can achieve them.



My College QuickStart™

This is a free personalized planning kit for all PSAT/NMSQT takers. With it, you can:

- View a detailed online PSAT/NMSQT score report
- Prepare for the SAT using a study plan based on your PSAT/NMSQT results
- Connect to detailed profiles of suggested colleges, majors, and careers

[Sign Up Now](#)

Articles

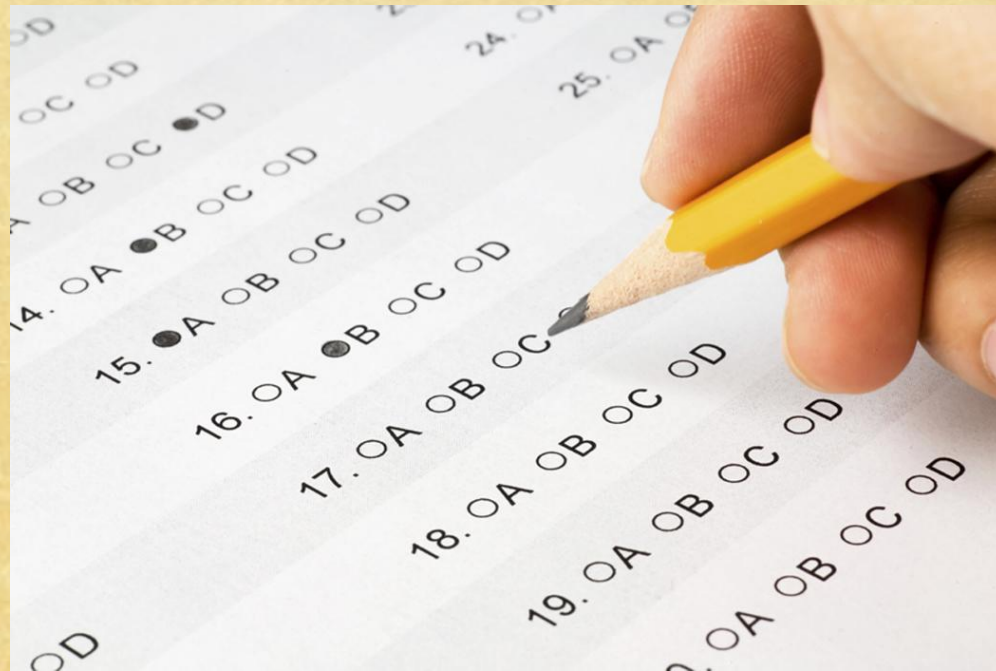
Starting Points

- Senior Action Plan
- Junior Action Plan
- Twenty Questions to Ask Your School Counselor
- See all Articles

High School

- Balancing High School and Part-Time Work
- Distance Education: Is a Virtual Classroom for You?
- Balancing School and Activities
- See all Articles

COLLEGE TESTS



The SAT

sat.collegeboard.org



Homepage

[Practice](#)[Register](#)[Scores](#)[Help](#)[About the Tests](#)

My Organizer

User Name: Password: Forgot user name?
Forgot password?[Sign In](#)

Join. It's Free!

[Sign Up](#)The Question of
the Day Mobile App

Download
the app to
your iPhone®
or iPod Touch®
for free and
practice on
the go!



Did you know? The SAT connects you to scholarships, merit aid and more! >

1 2 3 4

Do you want to:

[Register Now](#)[Send Scores](#)

Test Center Closings: Check here for the latest >

Practice

Official SAT Questions

- A** Free sample SAT questions
- B** Free full SAT practice test
- C** Official SAT Online Course
- D** Official SAT Study Guide

Real SAT Subject Tests Questions

- A** Free sample SAT Subject Test questions
- B** Official SAT Subject Tests Study Guides

Register

Upcoming Tests

Today is Sunday, October 02, 2011

Date	Deadline*	Status
Nov 5	Oct 7	Register Now
	Oct 21	Register Late
Dec 3	Nov 8	Register Now
	Nov 20	Register Late

*Deadlines expire at midnight, EDT (U.S.A.).

Scores

See & Send Scores

Date	Available	Status
Oct 1	Oct 20	available in 18 days

[More Score Info](#)

Score Choice™: Put your best foot forward by choosing which scores to send to colleges. Learn more >

SAT test dates

Upcoming U.S. SAT and SAT Subject Test™ test dates

[Register Now](#)

[Print All U.S. Test Dates](#)



[Important information about Eid Al Adha and the November 2011 SAT](#)

**Deadlines expire at midnight, EDT (U.S.A.).*

SAT Dates	SAT Subject Tests Available	Register-By Date*	Late Registration*		Changes By*	Register
			Mail	Phone/Online		
<div style="background-color: red; color: white; padding: 5px; display: inline-block;">Nov 5</div> Study plan	▶ Subject Tests	<div style="color: red; font-weight: bold;">Oct 7</div>	<div style="color: red; font-weight: bold;">Oct 21</div>	<div style="color: red; font-weight: bold;">Oct 21</div>	<div style="color: red; font-weight: bold;">Oct 19</div> Learn how	<div style="color: blue; font-weight: bold;">Register Late</div>
<div style="background-color: red; color: white; padding: 5px; display: inline-block;">Dec 3</div> Study plan	▶ Subject Tests	<div style="color: red; font-weight: bold;">Nov 8</div> Reminder	<div style="color: red; font-weight: bold;">Nov 20</div>	<div style="color: red; font-weight: bold;">Nov 20</div>	<div style="color: red; font-weight: bold;">Nov 16</div> Learn how	<div style="color: blue; font-weight: bold;">Register Now</div> 30 days left

Additional fees apply if you register late or make changes to your test type, center or date after registering. [See all U.S. and international registration dates.](#)
[View the latest test center closings.](#)

Register

[How to Register](#)

[Test Dates](#)

[Services and Fees](#)
[Fee Waivers](#)

[Making Changes](#)

[Students with Disabilities](#)

[Special Circumstances](#)

[Test Day Tips](#)
[Test Day Simulator](#)
[Test Day Checklist](#)

[Code Search](#)

My Organizer

User Name:

Password:

[Forgot user name?](#)
[Forgot password?](#)

[Sign In](#)

Join. It's Free!

[Sign Up](#)

How to Register

Sign up for the SAT and SAT Subject Tests™

[Register](#)

Next Tests:
11/5, 12/3

Jump to: [Register Online](#) | [Register By Mail](#) | [Standby Registration](#) | [Home-Schooled Registration](#)

Register Online

The quickest and easiest way to register!

- Choose your test date and test center in real time
- Get immediate registration confirmation
- Get 24-hour access to registration for printing or correcting your Admission Ticket

Say "Yes" to Student Search Service®

How can colleges find out about you before you apply? When you say "yes" to Student Search Service, we'll send colleges some information about you, giving them the opportunity to reach out to a potential new student.

Help colleges find you!

[Learn More](#)

Register by Mail

Certain situations require that you register by mail. You should use mail registration if you:

- want to pay by check or money order (payable to "The College Board")
- are **younger than 13 years old**
- are registering for **Sunday testing** for the first time due to a religious observance
- are **requesting that we open a test center nearer to your home**

[Register](#)

Upcoming SAT Tests

Test Date	Dead-line*	Status
Nov 5	Oct 7	Register Now
Dec 3	Nov 8	Register Now
Jan 28	Dec 30	Register Now

Upcoming SAT Subject Tests

Test Date	Dead-line*	Status
Nov 5	Oct 7	Register Now
Dec 3	Nov 8	Register Now
Jan 28	Dec 30	Register Now

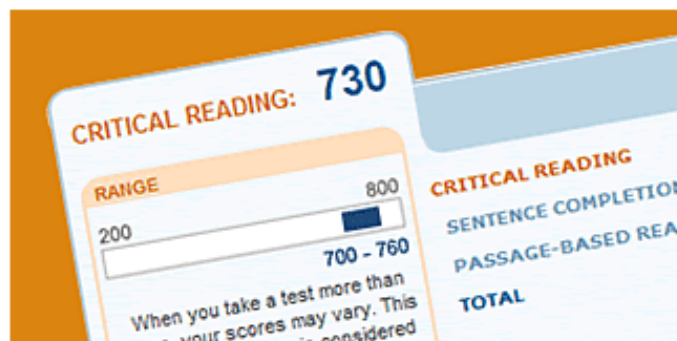
**Deadlines expire at midnight, EDT (U.S.A.).*

[See international dates](#)
[Search for test center codes](#)

Free When You Register for the SAT®

Online Score Report:

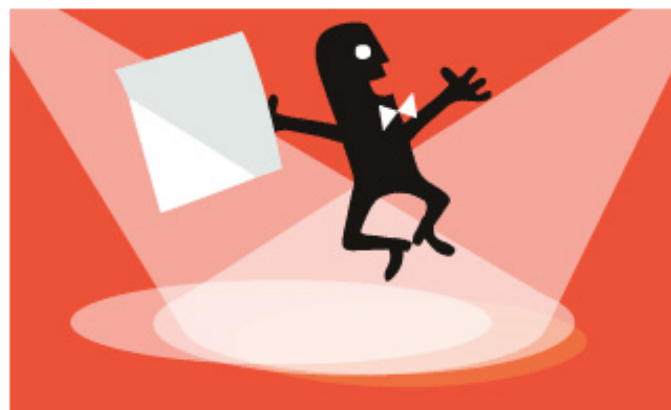
See how you did on different kinds of questions in each section of the test >



[Get Started](#)
[Take a Tour](#)







Score Choice™:

Choose the scores you send to colleges for the SAT and SAT Subject Tests™ >



[Learn More](#)

Test & Registration Fees

Test	Fee	Practice with official SAT questions
SAT Register	\$49 Fee waiver available	 Subscribe to The Official SAT Online Course™  Answer The Official SAT Question of the Day™  Buy The Official SAT Study Guide™: Second Edition  Practice with official SAT questions
SAT Subject Tests Register	\$22 Basic Subject Test Fee (Per Registration) +\$22 Language with Listening Tests (Per test) +\$11 All other Subject Tests (Per test) <hr/> = Total fees vary by number and type of tests. ▶ See an example Fee waiver available	 Practice with new official SAT Subject Test™  Buy The Official Study Guide for all SAT Subject Tests™

Register

How to Register

Test Dates

Services and Fees
Fee Waivers

Making Changes

Students with Disabilities

Special Circumstances

Test Day Tips
Test Day Simulator
Test Day Checklist

Code Search

My Organizer

User Name:

Password:

Forgot user name?
Forgot password?

[Sign In](#)

Join. It's Free!

[Sign Up](#)

Make Test Changes

How to change your test type, site or date

[Register](#)

Next Tests:
11/5, 12/3

Jump to: [Test Center, Date](#) | [Receiving or Correcting Admission Ticket](#) | [Absent on Test Day](#) | [Makeup Testing](#)

Test Center, Date or Which Test You're Registered to Take

To make a change to your test center, test date or the test you registered to take, you must:

1 Make the change no later than the Wednesday 2–3 weeks before your test date

Changes to your test center or test date can be made online through your free account or by calling Customer Service.

To change your test type, you must [contact us by phone](#) Monday through Friday, from 8 a.m. to 9 p.m. ET. Summer hours (after the June administration through August) for SAT Program Customer Service are Monday through Friday, from 9 a.m. to 7 p.m. EDT.

2 Pay an additional change fee

A credit card (Visa, MasterCard, American Express or Discover) is required to pay the [change fee](#). When making the change by phone, be ready to tell the Customer Service representative your registration number and test date, and the credit card information.

3 Print your updated ticket

Print Your Updated Admission Ticket

If you miss the deadline for making a change, you can still try to make the change on the day of the test. Go early to the test center of your choice and explain the situation to the test supervisor. If space and materials are available, you will be admitted before standbys. You will be billed later for the change fee. If you fail to pay the change fee, your scores will not be released.

Register

[How to Register](#)

[Test Dates](#)

[Services and Fees](#)

[Fee Waivers](#)

[Making Changes](#)

[Students with Disabilities](#)

[Special Circumstances](#)

[Test Day Tips](#)

[Test Day Simulator](#)

[Test Day Checklist](#)

[Code Search](#)

My Organizer

User Name:

Password:

[Forgot user name?](#)

[Forgot password?](#)

[Sign In](#)

[Join. It's Free!](#)

[Sign Up](#)

SAT Test Day Tips

When test day arrives, be prepared.

[Register](#)

Next Tests:

11/5, 12/3

Test Day Checklist

No. 2 pencils aren't the only things you need for test day! Review the Test Day Checklist to see what you should bring, what's nice to have and what to leave at home on the day of your test.



Things to Bring



Things not to Bring



[Go!](#)

Test Day Simulator

Want to know exactly what a test day looks, feels and sounds like? Check out the Test Day Simulator, an interactive guide to the whole SAT experience, from "You may begin" to "Pencils down."



[Go!](#)

How the SAT Is Scored




Register

Next Tests:
11/5, 12/3

1 First, we calculate your raw scores




Your raw scores are calculated for each section based on the number of questions you got correct or incorrect, or that you omitted.

SAT Scoring

 Correct Answers	 Incorrect Answers	 Omitted
+1 point for questions you get correct	-1/4 point subtracted for incorrect multiple-choice 0 points subtracted for incorrect student-produced response (math section)	0 points subtracted for questions you don't answer

[See how the essay is scored.](#)

Subject Tests Scoring

 Correct Answers	 Incorrect Answers	 Omitted
+1 point for questions you get correct	-1/4 point subtracted for each 5-choice question -1/3 point subtracted for each 4-choice question -1/2 point subtracted for each 3-choice question	0 points subtracted for questions you don't answer

Essay Scoring

How it's scored, and what the scores mean

Register

Next Tests:

11/5, 12/3

How the Essay Is Scored

Each essay is independently scored by two readers on a scale from 1 to 6. These readers' scores are combined to produce the 2-12 scale. The essay readers are experienced and trained high school and college teachers.



If the two readers' scores differ by more than one point (a rare situation), a third reader scores the essay.

Scoring Guide

Understanding Your Scores

Register

Next Tests:
11/5, 12/3

SAT Scores

SAT scores are reported on a scale from 200-800, with additional subscores reported for the essay (ranging from 2-12) and for multiple-choice writing questions (on a 20-80 scale). Your scores tell college admissions staff how you did compared with other students who took the test. For example, if you scored close to the mean or average — about 500 on SAT critical reading and 500 on SAT mathematics — admissions staff would know that you scored as well as about half of the students who took the test nationally.

SAT Subject Test Scores

SAT Subject Test scores are reported on a scale from 200-800, with subscores being reported on a scale from 20 to 80. Reading and listening subscores are reported for all Language Tests with Listening, and a usage subscore is also reported for the Chinese, Japanese, and Korean tests. Your scores tell college admissions staff how you did compared with other students who took the test.

[Read about verifying your scores.](#)
[Read about how the test is scored.](#)

Score Range

Your test score represents a snapshot in time. If you took the test multiple times, however, that number would likely change — increase or decrease — on each test. This is why we sometimes say a score range better represents your true ability; it considers multiple snapshots of your score instead of just one. Usually, your scores fall in a range of roughly 30 to 40 points above or below your true ability. Colleges know this, and they receive the score ranges along with your scores to consider that single snapshot in context.

The ACT

www.actstudent.org




Information

- ▶ Test dates and deadlines
- ▶ Change your registration
- ▶ Writing Test option
- ▶ Admission ticket
- ▶ Find out if your calculator is allowed
- ▶ View your scores
- ▶ Send your scores
- ▶ Retake the test
- ▶ Students with disabilities

ACT Codes

- ▶ Test Center Codes (U.S. and Canada)
- ▶ Test Center Codes (International)
- ▶ College and Scholarship Codes
- ▶ High School Codes

 Like 5K

 Follow @actstudent

The ACT Student Web Account ...

where you can register for the test, send your scores, and much more!

SIGN UP / LOG IN

Learn how to create an account if you've:

[never tested](#) | [tested before](#)

★ If you want to send your scores from past test dates to colleges, sign up or log in above.

Next ACT Test Date

[Rescheduled Test Centers: Sept 10 Test Date](#)

OCTOBER
22
2011

Registration is closed.
Standby Testing available:
[More info...](#)

Other ACT Sites: [Educators](#) | [Parents](#) | [EXPLORE[®]](#) | [PLAN[®]](#)

iPhone and iPod touch are trademarks of Apple Inc., registered in the U.S. and other countries.

Video Contest

Who will win
\$5,000
for college?

Vote for Your Favorite Video



Powered by
OPENFILM LAUNCHPAD

Mobile Apps

ACT College Search
for iPhone[®] and iPod touch[®]

Prepare

ACT Online Prep[™]



Registration

▶ Register to Test

Useful Information

▶ Test dates

▶ ACT fees

▶ Services for students with disabilities

▶ Standby testing

Test Centers

▶ U.S. and Canada

▶ International

Codes

▶ High school

▶ College and scholarship

ACT Online Prep™

THE WRITING TEST
Do you need to take it?



How do I sign up for the ACT?

Online registration is the fastest method. You will know immediately if your preferred test center has space for you to test and can print your admission ticket. How you sign up depends on where and how you plan to test: please see below for how to register.

Reminder: You need to register by mail only if you are younger than 13 or cannot pay by credit card.

- If you plan to test at a [national or international test center](#), sign up online by creating or logging in to your [student Web account](#)
- If you are requesting [extended time](#) or [other accommodations](#) for the first time, sign up online by creating or logging in to your [student Web account](#) or [register by mail](#) **in addition to** completing the application request and submitting required documentation.
- If you missed the late registration deadline, you may [request standby testing](#) by creating a Web account and completing a downloadable request form.
- If you are [homebound or confined](#), cannot find a test center within 50 miles of your home (U.S. and Canada) or in your country (other locations), or you need a [Non-Saturday test center](#) and one is not established within 50 miles of your home (or in your country if outside the U.S. or Canada), on **all test dates**, check the requirements for [Arranged Testing](#)

Also check the detailed list of [2011-2012 ACT Fees and Services](#)

Test Dates in the U.S., U.S. Territories, and Canada

[Test Dates in other countries](#)

2011–2012

2012–2013

2013–2014

Test Date	Registration Deadline	(Late Fee Required)
September 10, 2011	August 12, 2011	August 13 – 26, 2011
October 22, 2011	September 16, 2011	September 17 – 30, 2011
December 10, 2011	November 4, 2011	November 5 – 18, 2011
February 11, 2012*	January 13, 2012	January 14 – 20, 2012
April 14, 2012	March 9, 2012	March 10 – 23, 2012
June 9, 2012	May 4, 2012	May 5 – 18, 2012



TAKE
NOTE

* No test centers are scheduled in New York for the February test date.

2011 - 2012 ACT Fees and Services



TAKE
NOTE

All fees are **nonrefundable** unless otherwise noted.

For information on ACT Fee Waivers, see [Am I eligible for a fee waiver?](#)

Basic registration fee (per test option)

ACT (No Writing)

\$34.00

Includes reports for you, your high school (if you authorize reporting), and up to four college choices (if valid codes are provided when you register).

ACT Plus Writing

\$49.50

Includes reports for you, your high school (if you authorize reporting), and up to four college choices (if valid codes are provided when you register). The \$15.50 Writing Test fee is refundable, on written request if you are absent on test day or switch to the ACT (No Writing) before testing begins.

Test Prep



ACT Online Prep™

The only test preparation program designed exclusively by ACT test development professionals is now online!

▶ LEARN MORE

- [ACT Online Prep™](#)
The only test preparation program designed exclusively by ACT test development professionals!
- [The Real ACT Prep Guide](#)
The **official** ACT prep guide—the only one that includes five actual retired ACT tests—each with an optional Writing Test.
- [ACT Question of the Day](#)
Each day we post a new ACT Test practice question.—**FREE**
- [Preparing for the ACT \(PDF; 80 pages, 1,075KB\)](#) or [Preparación para el examen de ACT \(PDF; 86 pages, 1.18MB\)](#) —**FREE**
A free student preparation booklet available from most high schools and colleges —includes test information, complete practice tests with scoring keys, and a writing prompt with sample essays.
- [Practice test questions](#)—**FREE**
- [Alternate Format Practice Tests Order Form \(PDF; 1 page, 45KB\)](#)—**FREE**
- [Test tips](#)—**FREE**
- [Test descriptions](#)—**FREE**

Understand your scores

[View a sample score report](#)

- [How ACT figures the multiple-choice test scores and the Composite score](#)
- [Relationship between the tests, questions, and subscores](#)
- [What are national ranks?](#)

The information on this page applies only to the scores for the four multiple-choice tests (English, Reading, Mathematics, Science) and the Composite score. [Scoring information for the Writing Test](#) is also available.

You can also download the student interpretive booklet:

[Using Your ACT Results \(PDF; 16 pages, 475KB\)](#)

[Usando tus resultados ACT \(PDF; 16 páginas, 475KB\)](#)

This booklet explains what your scores mean. It can also help you compare your scores to those of other students who took the ACT, learn more about which colleges may be a good fit for you, and explore careers and majors before you decide which college you want to attend.

How ACT figures the multiple-choice test scores and the Composite score

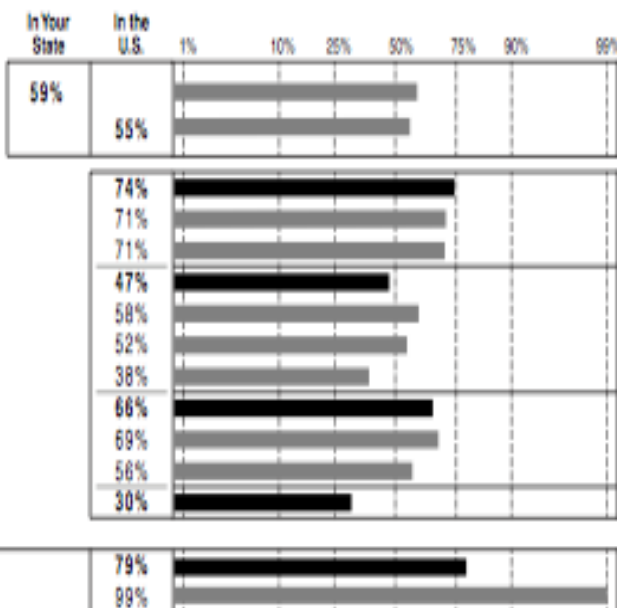
1. First we count the number of questions on each test that you answered correctly. We do not deduct any points for incorrect answers. (There is no penalty for guessing.)
2. Then we convert your raw scores (number of correct answers on each test) to "scale scores." Scale scores have the same meaning for all the different forms of the ACT, no matter which test date a test was taken.
3. Your **Composite score** and each **test score** (English, Mathematics, Reading, Science) range from 1 (low) to 36 (high). The Composite Score is the average of your four test scores, rounded to the nearest whole number. Fractions less than one-half are rounded down; fractions one-half or more are rounded up.
4. We compute your seven **subscores** (Usage/Mechanics, Rhetorical Skills, etc.) in the same way, but subscores range from 1 (low) to 18 (high). There is no direct, arithmetic relationship between your subscores and your test scores—this means your subscores don't add up to your test score.

Your ACT Scores

Rank: Approximate percent of ACT-tested students at or below your score

Composite Score 21

ENGLISH	24*
Usage/Mechanics	12
Rhetorical Skills	12
MATHEMATICS	19
Pre-Algebra/Elem. Algebra	11
Algebra/Coord. Geometry	10
Plane Geometry/Trig.	09
READING	23*
Social Studies/Sciences	12
Arts/Literature	11
SCIENCE	18



COMBINED ENGLISH/Writing 25
Writing (score range 2 to 12) 10

The Combined English/Writing score ranges from 1 to 36 and is a combined measure of the Writing and English tests. The Writing score ranges from 2 to 12. Your ranks for these tests are based on students who took the Writing test.

■ ACT® test scores and the Composite score range from 1 to 36; subscores range from 1 to 18.

■ Your Composite score is the average of your scores on the four subject area tests. Subscores do not necessarily add up to your score for a subject area test.

■ Your ranks tell you the approximate percentages of recent high school graduates in the U.S. and your state who took the ACT and received scores that are the same as or lower than yours. A rank of 70, for example, means that 70% of students received scores that are the same as or lower than your score.

■ Your test scores are only estimates, not precise measures, of your educational development. You will find more information about interpreting your scores in the booklet provided with this report and at www.actstudent.org.

How are the scores used?

- ♦ Scores are a standard way of measuring a student's aptitude for success in college level course work
- ♦ Scores can be used to:
 - ♦ Determine admission
 - ♦ Determine placement in introductory or remedial classes
 - ♦ Qualify for scholarships or financial assistance

SAT Score-Use Practice	Student-Focused Description
Highest Section Scores Across Test Dates — Version 1 (Highest M, CR, W)	<University X> has indicated that it considers your highest section scores across all SAT test dates that you submit. Feel free to send any additional scores that you want to make available to <University X>.
Highest Section Scores Across Test Dates — Version 2 (Highest M, CR, W)	<p><University X> has indicated that it considers your highest section scores across all SAT test dates that you submit. Only your highest section scores will be considered as part of the final admissions decision. Each time you submit scores, <University X> will update your record with any new high scores.</p> <p><University X> strongly encourages you to submit your scores each time you take the SAT. Sending your scores each time you take the SAT can benefit you by allowing <University X> to consider you for all available enrollment-related opportunities.</p>
Single Highest Test Date — Version 1 (Sum of M+CR+W)	<University X> has indicated that it considers the SAT scores from your single highest test date (the sum of mathematics, critical reading and writing). Feel free to send any additional scores that you want to make available to <University X>.
Single Highest Test Date — Version 2 (Sum of M+CR+W)	<p><University X> has indicated that it considers the SAT scores from your single highest test date (sum of M+CR+W). Only your highest scores will be considered as part of the final admissions decision. Each time you submit scores, <University X> will update your record with any new high scores.</p> <p><University X> strongly encourages you to submit your scores each time you take the SAT. Sending your scores each time you take the SAT can benefit you by allowing <University X> to consider you for all available enrollment-related opportunities.</p>
All SAT® Scores Required for Review	<University X> has indicated that it considers all SAT scores in its review process and requires that you submit all SAT scores from all test dates.

College/University Name	SAT Score-Use Practice
FLORIDA COLLEGE	Highest Section - Version 1
FLORIDA GULF COAST UNIVERSITY	Highest Section - Version 2
FLORIDA INSTITUTE TECHNOLOGY	Highest Section - Version 2
FLORIDA INTERNATIONAL UNIVERSITY	Highest Section - Version 1
FLORIDA STATE UNIVERSITY	Highest Section - Version 2
MIAMI DADE COLLEGE	Highest Section - Version 1
UNIVERSITY OF FLORIDA	Highest Section - Version 2
UNIVERSITY OF MIAMI	Highest Section - Version 2
UNIVERSITY OF SOUTH FLORIDA	Highest Section - Version 2
COLUMBIA UNIVERSITY UNDERGRADUATE ADMISSIONS	All Scores
GEORGE WASHINGTON UNIVERSITY	All Scores
STANFORD UNIVERSITY	All Scores

Data from the National Center for Educational Statistics

Top Florida Colleges SAT Scores (mid 50%) (Learn what these numbers mean)						
	Reading		Math		Writing	
	25%	75%	25%	75%	25%	75%
Eckerd	520	630	500	610	500	615
Flagler	520	590	510	590	500	590
Florida Tech	500	610	540	660	-	-
Florida International	510	600	500	590	500	590
Florida State	550	640	560	650	-	-
New College	630	730	590	670	600	690
Rollins	550	650	550	650	550	640
Stetson	500	600	490	600	-	-
UCF	530	620	560	650	510	600
University of Florida	560	670	580	690	-	-
University of Miami	570	680	600	700	570	670
USF	520	620	530	640	500	600

Data from the National Center for Educational Statistics

Top Florida Colleges ACT Scores (mid 50%)

[\(Learn what these numbers mean\)](#)

	Composite		English		Math	
	25%	75%	25%	75%	25%	75%
Eckerd	22	28	22	28	20	27
Flagler	21	24	21	26	20	24
Florida Tech	23	28	21	28	23	29
Florida International	22	26	21	26	22	26
Florida State	24	28	-	-	-	-
New College	27	30	28	34	24	29
Rollins	-	-	-	-	-	-
Stetson	21	26	20	26	19	26
UCF	23	28	-	-	-	-
University of Florida	25	29	-	-	-	-
University of Miami	27	31	27	33	26	32
USF	22	28	-	-	-	-

Table 1
Concordance between ACT Composite Score and
Sum of SAT Critical Reading and Mathematics Scores

SAT CR+M (Score Range)	ACT Composite Score	SAT CR+M (Single Score)
1600	36	1600
1540-1590	35	1560
1490-1530	34	1510
1440-1480	33	1460
1400-1430	32	1420
1360-1390	31	1380
1330-1350	30	1340
1290-1320	29	1300
1250-1280	28	1260
1210-1240	27	1220
1170-1200	26	1190
1130-1160	25	1150
1090-1120	24	1110
1050-1080	23	1070

The College Placement Test (CPT)

www.college-placement-test.org

GO!

Note: Some of the following documents are provided in Adobe Acrobat format. You will need the free [Adobe Acrobat Reader](#) to view them.

Placement Testing Information

STUDENTS SEEKING ASSOCIATE DEGREES OR COLLEGE CREDIT CERTIFICATE

Miami Dade College (MDC), along with all other Florida community colleges, administers the Florida College Entry-Level Placement Test.

The test is administered on the computer and is commonly referred to as the CPT. The test measures reading, writing, and algebra skills. MDC requires additional testing in mathematics depending on the score received on the algebra subtest of the CPT.

The test is untimed but most students take approximately two hours to complete the test. A paper and pencil version of the test and special accommodations for disabled students are also available. Placement test scores are valid for two years.

- [Agreement for the administration of the CPT to public high school students](#)
- [PERT Information](#)
- [Preparing for the CPT: A Student Guide](#)
- [Retest procedure for CPT/PERT \(effective July 22, 2011\)](#)
- [STOP information for College-Level Mathematics Course Placement](#)
- [STOP information for CPT Course Placement](#)
- [What are the placement scores for students entering MDC?](#)
- [When should EAP students take the CPT/PERT?](#)
- [Who is required to take the CPT?](#)
- [Who is exempt from the CPT?](#)

HIGHLIGHTS OF THE CPT

CPT in Brief	
Content:	The CPT measures skills in reading, sentence skills, and mathematics.
Format:	The CPT is a multiple-choice, computer-administered test. A paper-pencil version is also available upon request.
Type:	The CPT is an un-timed test. Students typically take approximately 2 hours to complete all three subtests.
Purpose:	The CPT results provide students with information regarding basic skills levels which may be used for remediation purposes prior to high school graduation.
Grades:	Eligible grade 11 students are invited to take the CPT.
Dates and Times:	The target testing is from the first Monday in November through the last Friday in March. However, the CPT is available for eligible high school students throughout the academic year. Testing is available on a walk-in basis.
Registration:	Interested students, who are not testing on a walk-in basis, must register at their high school for group administrations. All group testing arrangements must be made, by appointment, at least 10 business days before their projected test date.
Fee:	No cost to high school students. However, high school graduates must pay a \$10.00 re-testing fee.
Test Site:	Students may take the CPT at any MDC campus testing center.
Transportation:	Transportation to the testing center is not provided by the College.
Score Reports:	Students will receive one copy of their score report. An additional copy is provided to the high school. An electronic file will also be provided to the school district by MDC.

PLACEMENT CRITERIA FOR ACADEMIC YEAR 2011-2012

Effective June 22, 2011

Effective 2011-2, the State will discontinue all current developmental education courses in MAT, ENC, and REA. The following new courses will be used: MAT 0018, MAT 0022, MAT 0028, ENC 0015, ENC 0025, REA 0007, and REA 0017. This document will be updated as needed. The guide below is for 2011-1 only. Page 5 has the guide effective for **2011-2**.

COURSE PLACEMENT GUIDE – FCELPT			
Skill Area	ACCUPLACER (CPT) Subtest Score	PERT Subtest Score	Course Placement
Reading*	20 - 50	50 - 61	REA 0001 ⁽¹⁾
	51 - 70	62 - 83	REA 0002
	71 - 82	84 - 103	REA 0003
	83 - 120	104 -150	EXEMPT
Writing*	20 - 50	50 - 61	ENC 0002 [^]
	51 - 70	62 - 89	ENC 0020 [^]
	71 - 82	90 - 98	ENC 0021 [^]
	83 - 120	99 - 150	ENC 1101 [^]

¹Students scoring at this level must see an advisor prior to registering.

*Students who have not satisfied college preparatory reading requirements may not enroll in college-level English even if their writing test score is 83 or higher. Students who have not satisfied college preparatory reading and writing requirements may not enroll in any Gordon Rule course except mathematics. Students may select from a list of courses maintained by the Academic Advisement office and approved by the pertinent academic department, for co-enrollment with college prep courses.

[^]Faculty may recommend supplemental services based on a required writing sample.

College Preparatory faculty will provide a diagnostic at the beginning of the course to confirm course placement.

Alternate instruction may be provided to those students who score between a 20-50 on the CPT or 50-61 on the PERT.

PLACEMENT CRITERIA FOR ACADEMIC YEAR 2011-2012

Effective June 22, 2011

Effective 2011-2, the State will discontinue all current developmental education courses in MAT, ENC, and REA. The following new courses will be used: MAT 0018, MAT 0022, MAT 0028, ENC 0015, ENC 0025, REA 0007, and REA 0017. This document will be updated as needed. The guide below is for 2011-1 only. Page 5 has the guide effective for **2011-2**.

Placement may be based on a combination of tests. Arithmetic scores are required for students scoring below the noted score on the Algebra subtest.

Skill Area	ACCUPLACER (CPT) Subtest Score			PERT Subtest Score	Course Placement
	Algebra	Arithmetic	College-Level Math	Math	
Mathematics	20 – 71	20 - 29	Subtest Not Required	50 - 64	MAT 0002
	20 – 71	30 – 64	Subtest Not Required	65 - 95	MAT 0020
	20 – 71	65 - 120	Subtest Not Required	96 - 112	MAT 0024 or MAT 0029 ⁽⁴⁾
	72 – 120 ⁽³⁾	Subtest Not Required	Subtest Not Required ⁽¹⁾	113 - 122	MAT 1033 ⁽²⁾
		Subtest Not Required	20 – 39		Not Used
		Subtest Not Required	40 – 62	123 - 134	MAC 1105, MGF 1106, MGF 1107, or STA 2023
		Subtest Not Required	63 – 120	135 - 150	Refer to Mathematics Department

¹College-Level Mathematics subtest is available upon request if CPT algebra score is 72-86. Students who have already registered in a mathematics course (and are past the 100% refund deadline) are not eligible to take the CPT college-level mathematics subtest without permission from the chairperson of the Mathematics Department.

²MAT 1033 counts toward graduation elective credit at MDC for students taking this course as of Summer Term 2010-3.

³An algebra score in the range of 72-120 without a CPT college-level mathematics subtest score of 40 or higher places a student in MAT 1033.

⁴MAT 0029 will be used for the Statway pilot beginning in 2011-1 at North Campus for students who satisfied their college preparatory reading requirement and with majors that are not STEM or Business related. Course design includes STA 2023 and SLS 1505 as co-requisites.

Earning College Credit in High School

True



False



Advanced Placement (AP)

- ♦ **AP Program offers more than 30 courses across multiple subject areas**
- ♦ **Courses developed by committees of college faculty and AP teachers**
- ♦ **Courses cover the breadth of information, skills and assignments found in the corresponding college courses**

Course Home Pages



What's Here

In this area you will find teaching tips, information, resources, and other helpful content for every AP course. To access this content for the courses you teach, choose from the table below.

Course Home Page Index

Art History	Biology	Calculus AB	Calculus BC	Chemistry
Chinese Language and Culture	Computer Science A	English Language and Composition	English Literature and Composition	Environmental Science
European History	French Language and Culture	German Language and Culture	Government and Politics: Comparative	Government and Politics: United States
Human Geography	Italian Language and Culture	Japanese Language and Culture	Latin: Vergil	Macroeconomics
Microeconomics	Music Theory	Physics B	Physics C: Electricity and Magnetism	Physics C: Mechanics
Psychology	Spanish Language	Spanish Literature	Statistics	Studio Art: 2-D Design
Studio Art: 3-D Design	Studio Art: Drawing	United States History	World History	

AP Exams

- ♦ Administered in May
- ♦ Designed to test students' ability to perform at a college level
- ♦ Exams are in two parts
 - ♦ Free-response (either essay or problem solving)
 - ♦ Multiple-choice questions
- ♦ World language exams have speaking component
- ♦ AP Studio Art is a portfolio assessment
- ♦ AP Music Theory includes a sight-singing task

AP Exams - Scoring

What AP scores represent

Each AP Exam score is a weighted combination of the student's score on the multiple-choice section and the free-response section. The final score is reported on a 5-point scale:

5 = extremely well qualified to receive college credit and/or placement

4 = well qualified to receive college credit and/or placement

3 = qualified to receive college credit and/or placement

2 = possibly qualified to receive college credit and/or placement

1 = no recommendation for receiving college credit and/or placement

Periodically, the AP Program conducts college comparability studies for each AP subject by administering a portion of the AP Exam to college students enrolled in equivalent courses. The Program then compares the performance of these students on the sample AP Exam with their actual course scores. Results indicate that:

- AP Exam scores of 5 are equivalent to grades of A in the corresponding college course.
- AP Exam scores of 4 are equivalent to grades of A-, B+, and B in college.
- AP Exam scores of 3 are equivalent to grades of B-, C+, and C in college.

AP – Credit & Placement

Credit & Placement Policies



Print Article



Email Article

Find institutions granting credit for qualifying AP Exam scores

Through qualifying AP Exam scores, students can earn credit, advanced placement, or both at most four-year colleges and universities in the United States, as well as at colleges and universities in more than 55 other countries.

Individual colleges and universities, not the College Board or the AP Program, grant course credit and placement. Because policies vary across institutions, students should obtain a college's AP policy in writing. **Encourage your students to find this information by using the [AP Credit Policy Info](#) search tool.**

Colleges that have received a student's AP score report will generally notify the student of any earned placement, credit, and exemption during the summer. Students can also contact the college's admissions office to check on the status of their AP credits.

AP at FIU

AP

ADVANCED PLACEMENT (AP) EQUIVALENCY TABLE

FIU

<http://www.apcentral.collegeboard.com>

Exam	Score: 3	Score: 4	Score: 5	UCC Equivalency
Art History	ART UCC1 (3)	ARH 2050 (3) ARH 2051 (3)	ARH 2050 (3) ARH 2051 (3)	Arts
Biology	BSC UCC1/ UCCIL (3, 1)	BSC 1010/ 1010L (3, 1)	BSC 1010/ 1010L (3, 1) BSC 1011/ 1011L (3, 1)	Natural Sciences (<i>Life</i>)
Calculus AB	MAC 2311 (4)	MAC 2311 (4)	MAC 2311 (4)	Quantitative Reasoning
Calculus BC	MAC 2311 (4)	MAC 2311 (4) MAC 2312 (4)	MAC 2311 (4) MAC 2312 (4)	Quantitative Reasoning
Calculus BC (AB Subscore)	MAC 2311 (4)	MAC 2311 (4)	MAC 2311 (4)	Quantitative Reasoning
Chemistry	CHM UCC1/ UCCIL (3, 1)	CHM 1045/ 1045L (3, 1)	CHM 1045/ 1045L (3, 1) CHM 1046/ 1046L (3, 1)	Natural Sciences (<i>Physical</i>)
Computer Science A	ELE UCC1 (3)	COP 2210 (4)	COP 2210 (4)	Quantitative Reasoning (<i>With score > 3</i>)
Computer Science AB	COP 2210 (4)	COP 2210 (4)	COP 2210 (4)	Quantitative Reasoning
Economics: Macro	ECO 2013 (3)	ECO 2013 (3)	ECO 2013 (3)	Social Inquiry (<i>Foundations</i>)
Economics: Micro	ECO 2023 (3)	ECO 2023 (3)	ECO 2023 (3)	Social Inquiry (<i>Foundations</i>)
English Language and Composition	ENC 1101 (3)	ENC 1101 (3) ENC 1102 (3)	ENC 1101 (3) ENC 1102 (3)	English Composition
English Literature and Composition	ENC 1101 (3)	ENC 1101 (3) ENC 1102 (3)	ENC 1101 (3) ENC 1102 (3)	English Composition

AP at UM



UNIVERSITY OF MIAMI

INFO FOR CURRENT STUDENTS • FACULTY AND STAFF

[ABOUT US](#) [ADMISSIONS](#) [ACADEMICS](#) [LIBRARIES](#) [RESEARCH](#) [STUDENT LIFE](#) [ATHLETICS](#) [MEDICAL CENTER](#)

[Home](#) » [Undergraduate Studies](#) » [AP/IB/CLEP Credits](#) » AP Credit Equivalencies

AP Credit Equivalencies

University of Miami Guidelines for the Advanced Placement Program of the College Entrance Examination Board*

AP EXAM	MINIMUM SCORE REQUIRED	UM EQUIVALENT	CREDITS AWARDED
American Govt. & Politics	4, 5	POL 201	3
American History	4, 5	HIS 101, 102	6
Art History	4, 5	ARH 131, 132	6
Studio Art	4, 5	Placement out of ART 101 after submission and approval of portfolio	
Biology	3, 4	BIL 101	3
	5	BIL 150, 151, 160, 161	10
Calculus AB	5	MTH 171	4
Calculus BC	4	MTH 171	4
	5	MTH 171, 172	8
Chemistry	4	CHM 111, 113	4
	5	CHM 111, 113, 112, 114	8
Computer Science A	4	CSA 101, 102	3
Computer Science B	4	CSB 101, 102	3
English Language and Composition	4	ENG 101, 102	6
English Language and Composition	5	ENG 101, 102	6
Environmental Science	4	ENV 101, 102	6
French Language and Culture	4	FRE 101, 102	6
French Language and Culture	5	FRE 101, 102	6
German Language and Culture	4	GER 101, 102	6
German Language and Culture	5	GER 101, 102	6
Italian Language and Culture	4	ITA 101, 102	6
Italian Language and Culture	5	ITA 101, 102	6
Japanese Language and Culture	4	JPN 101, 102	6
Japanese Language and Culture	5	JPN 101, 102	6
Latin Language and Culture	4	LAT 101, 102	6
Latin Language and Culture	5	LAT 101, 102	6
Music Theory	4	MUS 101, 102	6
Music Theory	5	MUS 101, 102	6
Physics	4	PHY 101, 102	6
Physics	5	PHY 101, 102	6
Spanish Language and Culture	4	SPA 101, 102	6
Spanish Language and Culture	5	SPA 101, 102	6
Statistics	4	STA 101, 102	6
Statistics	5	STA 101, 102	6
U.S. History	4	HIS 101, 102	6
U.S. History	5	HIS 101, 102	6
World History	4	HIS 101, 102	6
World History	5	HIS 101, 102	6

International Baccalaureate (IB)

- ♦ **The IB Diploma Programme is designed as an academically challenging and balanced programme of education with final examinations that prepares students, normally aged 16 to 19, for success at university and life beyond. The programme is normally taught over two years and has gained recognition and respect from the world's leading universities.**

How to interpret IB grades and transcripts

A student's examination performance in individual subjects is scored on a scale of 1–7 points with a further 3 points available based on a matrix of performance in the [theory of knowledge](#) (TOK) and the [extended essay](#) components. Students who display satisfactory levels of performance across all subject areas and achieve a minimum of 24 points (out of a possible 45) are awarded the IB diploma. All others receive a certificate of results for the subjects examined. Subjects are marked according to the following scale.

- 7** Excellent
- 6** Very good
- 5** Good
- 4** Satisfactory
- 3** Mediocre
- 2** Poor
- 1** Very poor
- N** No grade

IB at FIU



INTERNATIONAL BACCALAUREATE EQUIVALENCY TABLE



Equivalencies apply to diploma holders and non-diploma holders, as well as Standard and Higher Levels.

<http://www.ibo.org>

Exam	Score: 4	Score: 5 -7	UCC Equivalency
Biology	BSC UCC1/ UCC1L (3,1)	BSC UCC1/ UCC1L (3,1) & BSC 1010/ 1010L (3,1)	Natural Sciences (<i>Life</i>)
Chemistry	CHM 1032/ 1032L (3,1)	CHM 1032/ 1032L (3, 1) & CHM 1045/ 1045L (3, 1)	Natural Sciences (<i>Physical</i>)
Computer Science	CGS 2518 (3)	CGS 2518 (3) & ELE UCC1 (3)	Quantitative Reasoning
Economics	ECO UCC1 (3)	ECO 2013 (3) & ECO 2023 (3)	Social Inquiry (<i>Foundations</i>)
Ecosystems and Societies	EVR 1017 (3)	EVR 1017 (3) & ELE UCC1 (3)	Social Inquiry (<i>Societies/Identities</i>)
English A1	ENC 1101 (3)	ENC 1101 (3) & ENC 1102 (3)	English Composition
Environmental Systems	EVR 1001 (3)	EVR 1001 (3) & ELE UCC1 (3)	Natural Sciences (<i>Physical</i>)
Further Mathematics (Advanced Mathematics)	MAC UCC1 (3)	MAC UCC1 (3) & ELE UCC1 (3)	Quantitative Reasoning
Geography	GEA 2000 (3)	GEO 2200 (3) & ELE UCC1 (3)	Score 4: Social Inquiry (<i>Societies/Identities</i>) Score 5-7: Electives
History	WOH 2001 (3)	WOH 2001 (3) & ELE UCC1 (3)	Humanities w/ Writing (<i>Historical</i>)

IB at UM

IB Credit Equivalencies

Below is a list of Credit Equivalencies for International Baccalaureate examinations. UM guidelines for International Baccalaureate credit are subject to change at any point during the academic year.

HIGHER LEVEL IB EXAM	MINIMUM SCORE REQUIRED	UM EQUIVALENT	CREDITS AWARDED
African History	6	HIS 202	3
Arabic	4	ARB 101	3
	5	ARB 101, 102	6
	6, 7	ARB 101, 102, 201	9
Art	5, 6, 7	Placement out of ART 101 after submission and approval of portfolio	NONE
Biology	5, 6	BIL 101	3
	7	BIL 150/151, 160/161	10
Chemistry	5, 6	CHM 111/113	4
	7	CHM 111/113, 112/114	8
Computer Science	6, 7	CSC 120	4
Economics	5	ECO 211	3
	6, 7	ECO 211, 212	6
English A1	6, 7	ENG 105, 106	6

Dual Enrollment

- ◆ What is dual enrollment?
 - ◆ Dual enrollment is an acceleration program that allows high school students to simultaneously earn college credit and credit toward high school completion

Dual Enrollment

- ♦ **Students must meet the following eligibility requirements:**
 - ♦ **Be a student in a Florida public or nonpublic secondary school or in a home education program**
 - ♦ **Have a 3.0 unweighted GPA**
 - ♦ **Pass the appropriate section of the college placement test (CPT)**
 - ♦ **Meet any additional admissions criteria specified by the postsecondary institution**

Dual Enrollment at Miami Dade College

Programs for High School Students



Time-saving Opportunities Dual Enrollment Standardized Examinations

✦ [FAQ's](#) ✦ [Benefits of Dual Enrollment](#) ✦ [Eligibility Requirements](#) ✦ [Guidelines, Procedures](#)
✦ [MDC - M-DCPS Dual Enrollment List](#) ✦ [Contacts](#) ✦ [Home School](#) ✦ [Florida Private Schools](#) ✦ [2010-2011 Interinstitutional Articulations Agreement](#)

Dual Enrollment - Frequently Asked Questions (FAQ's)

- [What is Dual Enrollment?](#)
- [What are some of the benefits of Dual Enrollment?](#)
- [Who is eligible for the Dual Enrollment program at Miami Dade?](#)
- [Are all college courses available for dual enrollment?](#)
- [When and where may dual enrollment courses be taken?](#)
- [Who pays the college tuition for the Dual Enrollment program?](#)
- [Who pays for the textbooks?](#)
- [What is the Dual Enrollment application process?](#)
- [Where can additional information about the Dual Enrollment program and registration procedures be obtained?](#)

Dual Enrollment at FIU

FIU DUAL ENROLLMENT
FLORIDA INTERNATIONAL UNIVERSITY

>>> UNDERGRADUATE EDUCATION HOMEPAGE | >>> FIU HOMEPAGE

WELCOME TO THE DUAL ENROLLMENT WEBSITE
Where high school students get an edge.



>>> HOME

>>> ABOUT

>>> FORMS

>>> REGISTRATION

>>> FINANCIAL RESPONSIBILITY

>>> CALENDAR

>>> FAQ'S

>>> CONTACT US

CONTACT INFO

FIU PC 249
11200 SW 8th St.
Miami, FL 33028
Tel: (305)348-2892
Fax: (305)348-2648

FIU AC-1 180
3000 NE 151st St
N. Miami, FL
33181
Tel: (305)919-5754
Fax: (305)919-5758

E-mail: advctr@fiu.edu

WELCOME TO THE DUAL ENROLLMENT WEBSITE

Where high school students get an edge



UNIVERSITY PARK



BISCAYNE BAY CAMPUS

UNDERGRADUATE EDUCATION SHOULD BE THE FIRST STOP ON CAMPUS FOR HIGH SCHOOL DUAL ENROLLMENT STUDENTS. Registration must be handled through Undergraduate Education – do not attempt to register for classes without going through this office. Failure to do so may result in the student being held responsible for the cost of the course(s) and textbook(s).

To view or search for classes [Click Here](#)

If a student has questions or needs help with the college admissions process, the student should make an appointment with his or her counselor.

Counselor Assignments

- ♦ Ms. Kirk – Hospitality & Tourism, Information Technology 12th Grade (L)

Room 36

- ♦ Ms. Enriquez – International Baccalaureate, Information Technology 9th Grade (A-Z)

Room 34

- ♦ Ms. Arnold/Dr. Martinez – Design & Architecture (A-L)

Room 33

- ♦ Ms. Falco-Diaz – Design & Architecture (M-Z)

Room 32

Counselor Assignments

- ♦ **Dr. Cortes – International Business & Finance
Room 45**
- ♦ **Dr. Laracuente – Medical (M-Z), Information
Technology 12th Grade (N-R)
Room 41**
- ♦ **Ms. Williams – Medical (A-L), Information
Technology 12th Grade (S)
Room 39**
- ♦ **Ms. Perdomo - Information Technology 12th
Grade (A-K), 10th & 11th Grades (A-Z)
Room 37**

Future Information Sessions

- ♦ **October 11, 2011 from 7:30-8:30 pm**
 - ♦ **College Entrance Tests**
 - ♦ **Earning College Credit in High School**
- ♦ **October 18, 2011 from 6:00-8:00 pm**
 - ♦ **College Fair with representatives from a variety of institutions**
- ♦ **November 8, 2011 from 7:30-8:30 pm**
 - ♦ **Financial Aid**

Ferguson College Fair Proposed Participants

- ♦ Miami Dade College
- ♦ Florida International University
- ♦ University of Florida
- ♦ University of South Florida
- ♦ University of Miami
- ♦ United States Air Force Academy
- ♦ United States Naval Academy

THE COLLEGE APPLICATION



The Application

Rule #1:

READ

EVERYTHING

VERY CAREFULLY

The Application

Rule #2:

**DON'T LEAVE
ANYTHING
BLANK**

The Application

Rule #3:

**TRIPLE-CHECK
EVERYTHING**

Which Application?

- ♦ The Common Application
 - ♦ www.commonapp.org
- ♦ Institution Specific Application
 - ♦ Used only for that institution
 - ♦ All Florida Public Universities (UF, FSU, UCF, etc.)
 - ♦ Nova Southeastern University
 - ♦ Embry-Riddle Aeronautical University
 - ♦ University of California
 - ♦ Georgetown University

Institution Specific Application

- ♦ **Go to the admissions page of the institution's website**
- ♦ **Read everything very carefully**
- ♦ **If possible, download and print all documents to practice on before you complete the application on-line**
- ♦ **Use the HELP features if you need them**

The Common Application

- ♦ Read the instructions carefully before you begin
- ♦ Check to make sure that the institution(s) you want to apply to actually accept the Common Application
- ♦ Check each institution to see which documents they require. Some institutions require an additional, institution-specific form in addition to the Common Application.

Common App Instructions

THE COMMON
APPLICATION
For Undergraduate College Admission

2011-12 INSTRUCTIONS

The 2011-12 Common Application for Undergraduate Admission may be used by students applying for admission for the Spring 2012 or Fall 2012 terms. The printed form is available from your secondary school college counseling office. It may also be downloaded or completed online at www.commonapp.org. Use of this form is governed by the License Agreement for Common Application Forms, a copy of which is displayed at <https://www.commonapp.org/Legal.aspx>. Please read this Agreement carefully before using the Common Application.

WHAT IS THE COMMON APPLICATION?

The Common Application is a not-for-profit membership organization that, since its founding over 35 years ago, has been committed to providing reliable services that promote equity, access, and integrity in the college application process. We serve students, member institutions, and secondary schools by providing applications—online and in print—that students and school officials may submit to any of our more than 450 members. Membership is open to colleges and universities that promote access by evaluating students using a holistic selection process.

WHY USE IT?

The Common Application simplifies the college admission process by saving time and eliminating duplication of effort. Once completed online or in print, copies of the Application for Undergraduate Admission and associated secondary school forms may be sent to any of the participating colleges and universities. This allows students to spend less time on the busywork of applying for admission, and more time on what's really important: college research, campus visits, essay writing, and senior year coursework.

IS IT WIDELY USED?

Yes! Last year, roughly 575,000 students submitted approximately 2.4 million applications via the Common App Online, and hundreds of thousands more were submitted on paper.

IS IT TREATED FAIRLY?

ABSOLUTELY! Our college and university members have worked together for nearly 40 years to develop this application. All members fully support its use, and all give equal consideration to the Common Application and the college's own forms. Many of our members use the Common Application as their only undergraduate admission application.

MAY ALL COLLEGES PARTICIPATE?

Membership is open to colleges and universities that evaluate students using a holistic selection process. A holistic process includes subjective as well as objective criteria, including at least one academic recommendation form, at least one untimed writing sample, and broader campus diversity considerations. If a college or university is not listed on our website, they are not members of the consortium. *Sending the Common Application to non-members is prohibited.*

WHAT IF I'M A TRANSFER STUDENT?

There's a Common Application for Transfer Admission as well as First-Year Admission. The Transfer Application is generally available only on our website, although a few of our members do print and distribute hardcopies.

APPLICANT INSTRUCTIONS

- Complete the **Application for Undergraduate Admission** in this booklet. Photocopy it for each college to which you are applying.
- Mail it, along with the appropriate application fee or fee waiver form, to each of your selected institutions. Visit the Member Colleges & Universities section of www.commonapp.org for detailed information about each institution's deadlines, requirements, fees, and mailing addresses.
- Complete the applicant section of the **School Report, Optional Grade Report, Midyear Report, and Final Report** and give these forms to your college counselor, *together with a list of the member institutions to which you are applying.*
- If any institution to which you are applying requires a **Teacher Evaluation**, ask a teacher(s) of an academic subject (for example, English, social studies, foreign language, math, or science) to complete that form as instructed and mail a copy to each of the institutions *on the list you provide.*
- Some institutions require supplemental forms along with your Common Application (for example, the International Supplement, college-specific supplements, the Arts Supplement, or the Athletic Supplement). Visit the Member Colleges & Universities section of www.commonapp.org to learn how to retrieve and submit these forms.
- Some institutions may require additional writing samples to complete an application. Some will also review additional material, such as music tapes, artwork, reports of scientific projects, etc. Consult each institution's instructions for submitting these materials.

Do not mail your application or any school forms to The Common Application offices. Doing so may delay or impede evaluation of your application. All forms, if mailed, must be sent to the admission offices of the colleges and universities to which you are applying.

Common App Institutions

All Members

[Printable version in HTML format](#)

There are now 456 Common Application members in 46 states and the District of Columbia, as well as in France, Germany, Italy, Scotland, and Switzerland. They represent an enormously diverse variety of institutions: small and large, public and private, coed and single-sex, highly selective and relatively open enrollment. However, they all share a commitment to the [mission](#) of promoting access through holistic admission.

1. Adelphi University
2. Agnes Scott College
3. Alaska Pacific University
4. Albany College of Pharmacy and Health Sciences
5. Albion College
6. Albright College
7. Alfred University
8. Allegheny College
9. American University
10. Amherst College
11. Arcadia University
12. Assumption College
13. Augsburg College
14. Augustana College (Illinois)
15. Augustana College (South Dakota)
16. Austin College
230. Ohio Northern University
231. Ohio Wesleyan University
232. Oklahoma City University
233. Otterbein University
234. Pace University
235. Pacific Lutheran University
236. Pacific University
237. Pepperdine University
238. Philadelphia University
239. Pitzer College
240. Plymouth State University
241. Polytechnic Institute of New York University
242. Pomona College
243. Presbyterian College
244. Prescott College
245. Princeton University

Common App Documents

THE 2011-12 COMMON APPLICATION TM

College Deadlines, Fees, and Requirements

Please review each institution's website for comprehensive instructions and information.

NOTES:

- All colleges are coeducational unless marked (W) or (M) or (C). C indicates two "coordinate" single-sex colleges geographically adjacent to each other that share an admission process, courses, faculty, etc.
- Some colleges charge different fees for students from the U.S. and international applicants. The fees shown here apply to applications submitted online. Some colleges charge different fees for applications submitted by mail. Please consult the institution's website for more specific instructions.

- Supplements Key: (School) Institution-specific supplement forms; (Arts) Common App Arts Supplement; (Athletic) Common App Athletic Supplement. [Please note that the Arts and Athletic supplements are accepted from all applicable students.] Consult institution-specific instructions regarding supplement deadlines, which may differ from the application deadlines.

- Standardized Tests Key: (SAT/ACT) Tests required/used by the institution; (Test Policy) A: Tests Always Required, F: Test Flexible, I: Tests Ignored, N: Tests Never Used, S: Tests Sometimes Optional. This testing policy applies to US citizens/permanent residents, of traditional college age, applying for full-time, degree-seeking status. Testing policy may vary for applicants who are transfers, non-US citizens/permanent residents, non-traditional age, or home-schooled. Please contact colleges directly to obtain more information about required testing for non-traditional undergraduate college students. (Int'l) If you are an international student and English is not your first or primary language, institutions with the "TI" code require that you take the TOEFL, IELTS exam. "See Website" indicates that this institution's testing requirements are too complex to be described in the space below.

- School Forms Key: (TE) Teacher Evaluation, (IS) International Supplement, (HS) Home School Supplement, (ED) Early Decision Agreement. [For those counselors submitting the school forms online, please note that all institutions now require the School Report and Final Report forms. For those counselors submitting in the paper format, please consult each institution's website for school form requirements.] These forms can be downloaded at www.commonapp.org (select download Forms). Colleges that save recommendations post-matriculation are indicated by a check mark in the last column.

Transfer Applicants: The information on this grid is for first-year applicants only. To see which institutions accept the Common Application for Transfers, and what their specific requirements are, please consult www.commonapp.org.

Common Application Member	Type (note 1)	Deadlines						Application Fees (note 2)		Supplements Used (note 3)			Minimum Standardized Tests Required (note 4)			School Forms Required (note 5)						
		ED	EDII	EA	EAI	REA	RD/Rolling	U.S.	International	School-Specific	Arts	Athl	SAT/ACT Tests Used			Test Policy	Int'l	TE	IS	HS	ED	Save Forms
Adelphi University				12/01			Rolling	\$40	\$50	✓			SAT w/ Writing or ACT w/ Writing				T	1	✓	✓		✓
Agnes Scott College	W			11/15	01/15		03/01	None	None	✓			See Website			N	TI	1	✓	✓		✓
Alaska Pacific University							Rolling	None	None	✓			SAT w/o Writing or ACT w/o Writing			A	T	2	✓	✓		✓
Albany College of Pharmacy and Health Sciences		11/01					02/01	\$75	\$75	✓			SAT w/ Writing or ACT w/ Writing			A	T	1	✓	✓	✓	✓
Albion College				11/26			01/06	None	None	✓			SAT w/o Writing or ACT w/o Writing				T	1	✓	✓		✓
Albright College							Rolling	None	None				See Website			N	TI	1	✓	✓		
Alfred University				12/01			Rolling	\$50	\$50				SAT w/o Writing or ACT w/o Writing			A	TI	1	✓	✓	✓	✓
Allegheny College				11/15			02/15	None	None	✓			See Website			A	T	1	✓	✓	✓	✓
American University				11/15			01/15	\$65	\$65	✓			SAT w/ Writing or ACT w/ Writing			S	TI	1	✓	✓	✓	✓

Review the Application

- ♦ Read each section carefully
- ♦ Make a note of specific or special information that is requested. Make a special note about all deadlines.
- ♦ Determine if an essay is required as part of the application
- ♦ Be careful with disclosure statements (“Have you ever”)
- ♦ Once you’ve reviewed the entire application and made a list of the information you need to gather, begin collecting the information

Deadlines



- ♦ **Deadlines are NON-NEGOTIABLE**
- ♦ **For the Common Application, check the Deadlines and Requirement Grid**
- ♦ **For Institution Specific Applications, check each institutions website for deadlines**
- ♦ **Remember to leave time for mailing if you are sending a paper copy of the application. Is the deadline “received by” or “postmarked by”?**

Gathering the Information

- ♦ **Family Information**
 - ♦ Employment
 - ♦ Education
- ♦ **Your Education**
 - ♦ Graduation Date: June, 2012
 - ♦ CEEB/ACT Code: 101846
 - ♦ Counselor's Information
 - ♦ Academics
 - ♦ Academic Honors or Awards
- ♦ **Extracurricular Activities & Work Experience**

Transcripts

- ◆ Official, sealed transcripts must be requested in writing from the Student Services office.
- ◆ The cost is \$1 per paper transcript.
- ◆ Plan on at least 24 hours for transcripts.
- ◆ Transcripts will not be mailed without a self-addressed stamped envelope.
- ◆ Electronic transcripts are available only to specific institutions.
- ◆ Request transcripts from dual-enrollment institutions.
- ◆ Make sure you request a final transcript in June.

Other Considerations

- ◆ **Common Application**
 - ◆ Early Decision Document
 - ◆ Art Supplement
 - ◆ Athletic Supplement
 - ◆ College Specific Supplement
- ◆ **Portfolio**
- ◆ **Audition**
- ◆ **Interview**

Review the Application Again

- ◆ **Make sure everything is filled in**
- ◆ **Make sure everything is accurate and correct**
- ◆ **Check your spelling and grammar**
- ◆ **Make sure you have all of the required forms and documentation**

If a student has questions or needs help with the college admissions process, the student should make an appointment with his or her counselor.

Counselor Assignments

- ♦ Ms. Kirk – Hospitality & Tourism, Information Technology 12th Grade (L)

Room 36

- ♦ Ms. Enriquez – International Baccalaureate, Information Technology 9th Grade (A-Z)

Room 34

- ♦ Ms. Arnold/Dr. Martinez – Design & Architecture (A-L)

Room 33

- ♦ Ms. Falco-Diaz – Design & Architecture (M-Z)

Room 32

Counselor Assignments

- ♦ **Dr. Cortes – International Business & Finance
Room 45**
- ♦ **Dr. Laracuente – Medical (M-Z), Information
Technology 12th Grade (N-R)
Room 41**
- ♦ **Ms. Williams – Medical (A-L), Information
Technology 12th Grade (S)
Room 39**
- ♦ **Ms. Perdomo - Information Technology 12th
Grade (A-K), 10th & 11th Grades (A-Z)
Room 37**

Future Information Sessions

- ♦ **October 11, 2011 from 7:30-8:30 pm**
 - ♦ **College Entrance Tests**
 - ♦ **Earning College Credit in High School**
- ♦ **October 18, 2011 from 6:00-8:00 pm**
 - ♦ **College Fair with representatives from a variety of institutions**
- ♦ **November 8, 2011 from 7:30-8:30 pm**
 - ♦ **Financial Aid**

Ferguson College Fair Proposed Participants

- ♦ Miami Dade College
- ♦ Florida International University
- ♦ University of Florida
- ♦ University of South Florida
- ♦ University of Miami
- ♦ United States Air Force Academy
- ♦ United States Naval Academy

QUESTIONS?

